

ADLINK Edge™ IoT NEON Smart Camera Solution

Connect, Stream, Control

Features

- Capture images and connect equipment at the Edge
- Stream real time operational data securely to Google Cloud
- Visualize data easily
- Access Google Cloud advanced analytics

Benefits

- Capture image data including barcodes or other defined items
- Combine with data from previously unconnected equipment
- Access valuable operational data instantly, continuously and securely
- View and understand what data you need to make decisions
- Use insight from Google Cloud analytics tools including advanced analytics, AI and machine learning to:
 - enhance existing customer databases, visualization & ERP systems
 - make informed decisions to optimize operations
 - enable corrective action
 - minimize downtime
 - improve quality

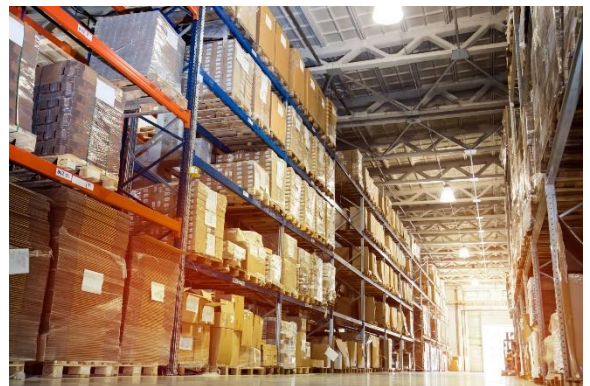


Overview

ADLINK Edge™ releases the power of your operational data and enables intelligent decision-making by streaming to Google Cloud to give you access to deeper insight from advanced analytics, AI and machine learning. With no programming necessary, ADLINK Edge™ quickly connects your previously unconnected operational equipment and sensors. Then by tapping into native communication protocols data can be captured and streamed at the Edge. From the Edge this data can then be streamed securely between devices, databases and to Google Cloud enabling analysis and easy visualization to inform your decisions and optimize your operations. All in real-time.

Use Case: Smart Pallets for Warehouse Logistics

ADLINK's solution makes packages and pallets themselves intelligent so they can detect where they're supposed to be when they're supposed to be there, in real time. The warehouse management system communicates with ADLINK Smart cameras which scan package barcodes to ensure all is correct. Any errors are instantly highlighted with spotlights enabling misplaced packages to be easily moved. Data is streamed easily and securely in real-time between edge devices, warehouse systems, ERP, Google Cloud and employees - making automated warehouse logistics simple. Analytics, security, device management and visualization at the Edge are made possible for easy control and increased productivity.



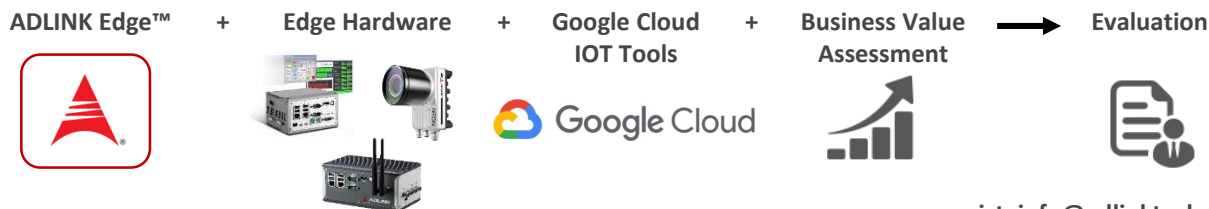
ADLINK Edge™ solutions are all vendor agnostic built on open standards and architected with modular components which allow for easy integration with any existing IT and OT system.

Specifications

Kit Name	NEON-1020/SSD32G/GCIOT KIT	NEON-1040/SSD32G/GCIOT KIT	NEON-J/SSD32G/GCIOT KIT
Processor	Intel Atom® E3845 quad core @1.91 GHz		ARM Cortex A57 2.0GHz & 256 Core NVIDIA Pascal GPU
Display	VGA output max 2048 x 1152 at 60 Hz		VGA output
RAM	4GB DDR3L		8GB LPDDR4 (built in Jetson TX2)
Storage	16-32GB solid state drive		32GB eMMC (built in Jetson TX2)
Resolution	2048 x 1088	2048 x 2048	1600 x 1200
Format	Monochrome		Color
Pixel Size	5.5µm		4.5µm
Frame Rate	120 fps	60 fps	60 fps
Digital Output	4 x sink type output, max sink 100mA sink voltage max 30VDC		
Digital Input	4 x TTL level input		
Ethernet	1 x GbE		
Serial Communication	1 x RS-232 (TX and RX only)		
USB	1 x USB 2.0		
Dimensions	68.5mm W x 110mm D x 52.7mm H/2.70" W x 4.33" D x 2.08" H		72.5mm W x 110mm D x 64.5mm H/ 2.85" W x 4.33" D x 2.54" H
Operating System	Windows 7, Windows Embedded Standard 7		Ubuntu
<i>(See also NEON Vision Series datasheet for more details)</i>			
ADLINK Edge™ platform including ADLINK Data River™			
Edge Core Apps	Node Manager, Dashboard, Service UI, Self Test		
Edge OT Connect	MODBUS, OPC UA, USB DAQ (others available on request)		
Edge Cloud Connect	Google Cloud IOT Core, Google Cloud IOT Edge (Google Cloud Subscription Required)		
Edge Visual Connect	Node Red (other apps available on request)		
Edge Historian Connect	Influx DB (other apps available on request)		
	ADLINK Edge IoT NEON 1020 Smart Camera Solution - Call for Pricing	ADLINK Edge IoT NEON 1040 Smart Camera Solution - Call for Pricing	ADLINK Edge IoT NEON-J Smart Camera Solution - Call for Pricing

Define your IoT solution with an ADLINK Edge™ Digital Experiment

Give yourself the Edge with ADLINK's Digital Experiment by identifying the operational data required to achieve real business results before full-scale commitment. ADLINK connects previously unconnected equipment and sensors at the Edge and streams data securely in real time to Google Cloud enabling analysis and easy visualization to inform decisions and optimize operations. **Find real business outcomes in as little as 30 days**



Digital Experiments starting at \$15,000 USD

ist_info@adlinktech.com



www.adlinktech.com

All products and company name listed are trademarks or trade names of their respective companies. Updated Feb. 13, 2019. ©2019 ADLINK Technology, Inc. All Rights Reserved. All specifications are subject to change without further notice.